

# Blades Biological Ltd

COWDEN . EDENBRIDGE . KENT . UK . TN8 7DX

Telephone: (01342) 850242 Fax: (01342) 850924

Email: [info@blades-bio.co.uk](mailto:info@blades-bio.co.uk) Online: <http://www.blades-bio.co.uk/>

## DROSOPHILA - Fruit Flies

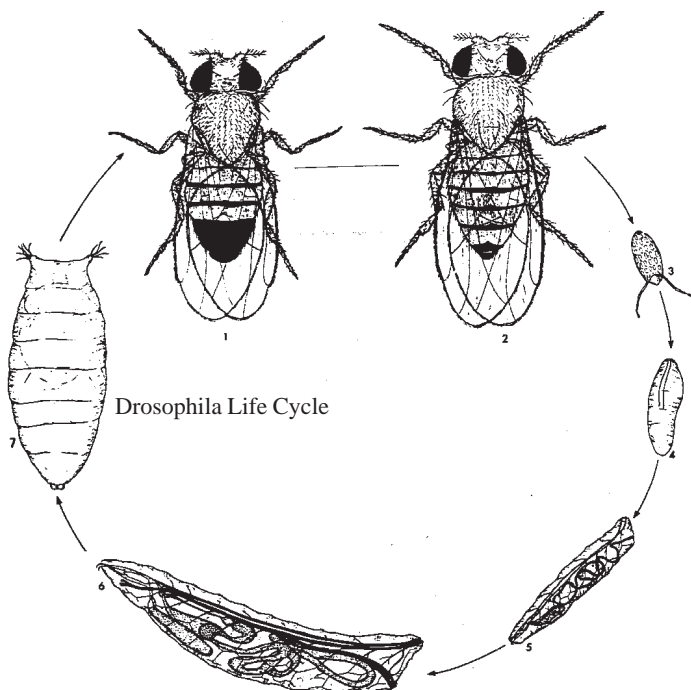
**On receipt:** Adjust the sponge bung to give maximum space and air circulation. The cultures are checked for the presence of larvae and pupae before dispatch, these will compensate for the possible loss of the adult flies which are delicate and do not always survive the journey.

**Temperature:** Keep *Drosophila* at about 21°C. The adults will live for slightly longer at a lower temperature but will not breed as quickly.

**Culturing:** The *Drosophila* should be subcultured onto fresh medium every ten days using our **Drosophila Quick Mix Medium**.

Available Strains

Wild Type  
Vestigial Wing  
White Eye  
Ebony Body  
Ebony Vestigial  
Scarlet Eye  
Ebony Curled  
Giant Flightless



For all drosophila equipment see our catalogue.