

# Blades Biological Ltd

COWDEN . EDENBRIDGE . KENT . UK . TN8 7DX

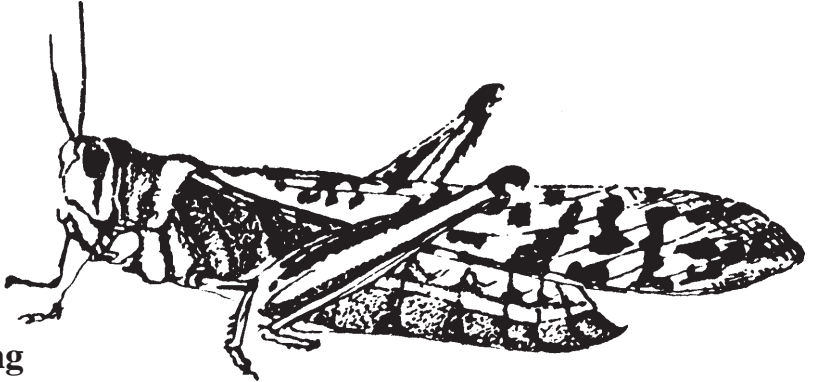
Telephone: (01342) 850242 . Fax: (01342) 850924

Email: [info@blades-bio.co.uk](mailto:info@blades-bio.co.uk) Online: <http://www.blades-bio.co.uk/>

## Locust Care Sheet

*Locusta* - Migratory Locust

*Schistocerca* - Desert Locust



### Housing

Locusts can be kept either in a purpose built cage or a tank with a tight fitting lid. Provide twigs or similar for the newly changed locusts to dry out on.

### Temperature

28°C - 34°C from a light bulb

### Feeding

Give the locusts fresh grass twice a day and make sure they always have bran. If left for a couple of days then bran, fresh carrot and cotton wool soaked with water should be left. Normally the locusts will gain water from the grass. Please note that the locusts should not be fed soaking wet grass. Excessive humidity is often the cause of bacterial infection in locusts.

### Breeding

When the adults start to mate, tubs of silver sand should be placed in the tank for the females to lay their eggs in.

### Young

The young hoppers will hatch within about two weeks and should be cared for in the same way as the adults.

**We are able to supply a wide range of other specimens, both living and preserved. Please contact us for a complete catalogue and price list.**